



# My Influential relative

By: Maeve Sweetman





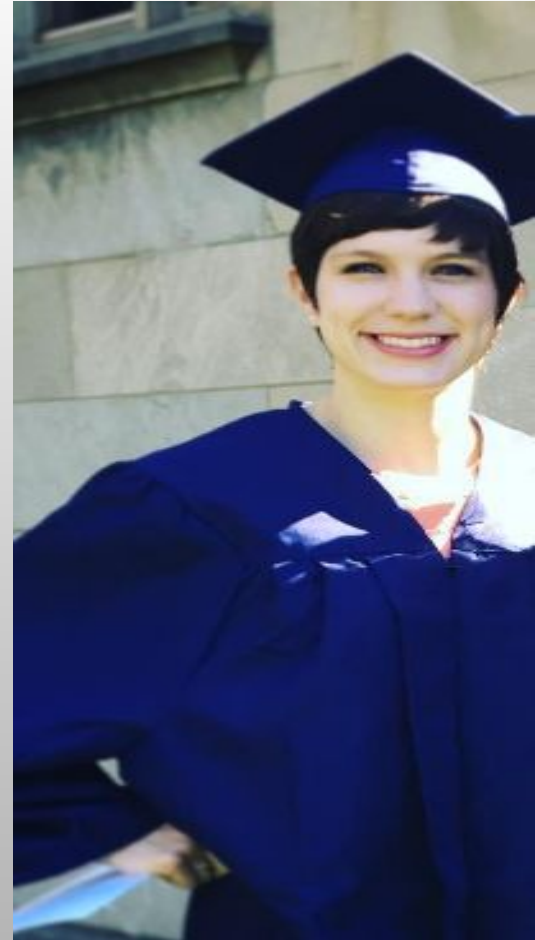
# What

What makes my cousin influential to me is that she encourages me to be brave.



# When

My cousin is most active in her life with college trying to get her masters in nursing.



# Where/Why

My cousin has an autoimmune disease that causes her to be tired and sick all the time. They can't fix her disease without making other things worse. She has been fighting it since she was 19 (she's now 23).



# How

How my cousin left her mark on me is by showing me how brave you can be in tough situations.



A woman wearing a purple hoodie and a grey cap is smiling and holding a small brown dog in her arms. They are on a beach with waves in the background under a sunset sky. The text "THE END" is overlaid on the right side of the image.

THE END